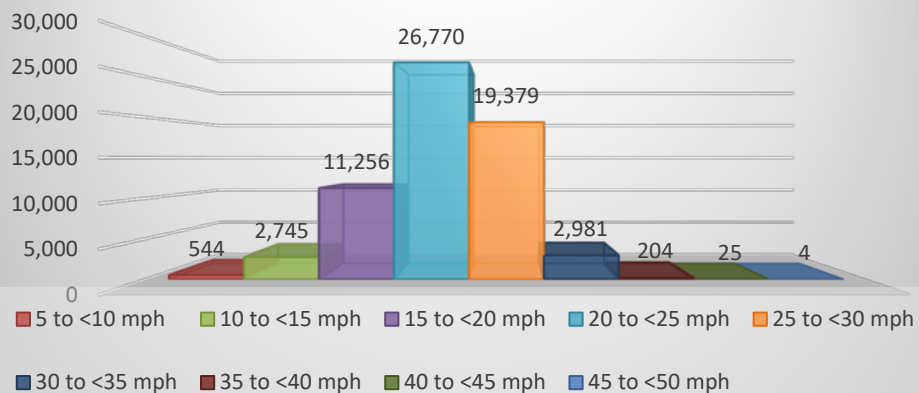


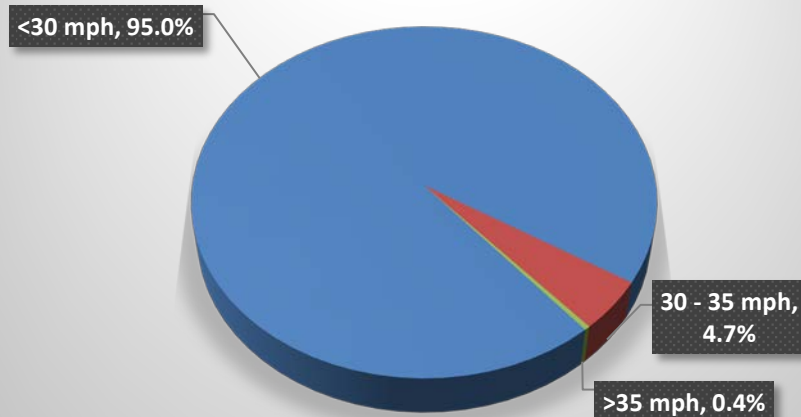
# TRAFFIC ANALYSIS REPORT

Road:	Langbury Lane
Location:	Junction with Glenbarrie Way
Period	15 Oct to 19 Nov
Speed of 85% of traffic	28.4 mph
Max Speed	50 mph on 20 October 2020 at 9:15 pm
Total Vehicles	63,908

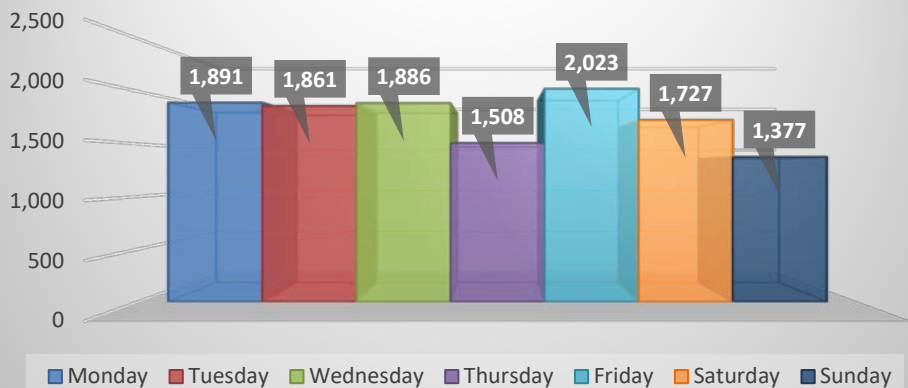
### Vehicles by Speed (mph)



### Vehicle speeds (%)



### Daily Average



### Average vehicles per hour

